

## R-501 R-502



### Flow Control Valve

#### Features:

- Multiple porting speeds piping
- Knurled knob for fast, accurate adjustments - no tools needed
- Fine adjustment for pneumatic timing

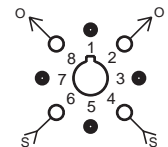
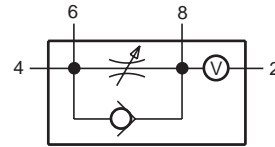
#### Performance:

**Flow:** 0 to 1 scfm @ 100 psig; 0 to 28.3 l/min

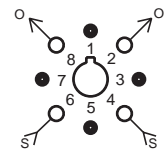
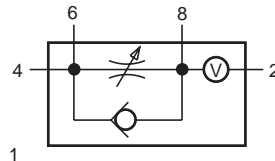
**Temperature:** 32° to 180° F

**Working Pressure:** 0 to 150 psig; 0 to 10.3 bars

### R-501 Delay In Flow Control



### R-502 Delay Out Flow Control



#### Description:

R-501 is an adjustable flow control designed to meter "IN" to an integral volume chamber to delay pressure build-up in one direction. Dual ports are provided to add extra volume or for multiple input-output connections.

R-502 is an adjustable flow control designed to meter "OUT" from an integral volume chamber to delay pressure decay in one direction.

## R-602 R-603



### Dual Shuttle Valves

#### Features:

##### R-602

- Bubble tight operation
- Two independent units in one module
- Saves space

##### R-603

- Complete three input subcircuit in one module
- Auxiliary outputs save fittings and time

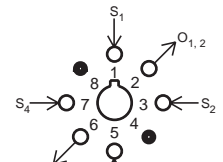
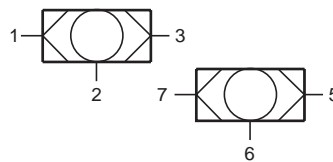
#### Performance:

**Flow:** 10 scfm @ 100 psig; 283 l/min @ 6.9 bars

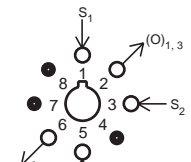
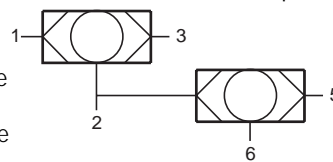
**Temperature:** 32° to 180° F

**Working Pressure:** 5 to 150 psig; 0.3 to 10.3 bars

### R-602 Dual Shuttle Valve



### R-603 3-Input "OR"



#### Description:

R-602 is a dual element combination consisting of two completely independent shuttle valves in a single body.

R-603 is a dual element combination consisting of two shuttle valves which are interconnected into a subcircuit.

It provides a 3-input "or" with port 2 available as an auxiliary. If not used, port 2 should be plugged.